

repairing the future...

UTS1004

ELECTRONIC UNIT INJECTOR AND UNIT PUMP TEST BENCH

What makes equipment professional?

- Capacity?
- Capability?
- User friendliness?
- Flexibility?
- Convenience?

UTS1004 injectester UIP has all these features built in. It is designed upon 30 years of diesel injection background of Maktest combined with excellence.

UTS1004 is not designed only for testing; its abilities reach far beyond, providing fine details such that to guide professionals directly to solution.

Maktest provides its customers;

- Updated information concerning test and repair instructions,
- Latest version control software and drivers,
- User's manuals and troubleshooting guides,
- Repair manuals for repairing various unit injectors and unit pumps.



An easy solution
for a big problem



MAKTEST DIESEL
INJECTION TEST AND
REPAIR SOLUTIONS



UTS1004 is the all makes Unit Injector and Unit Pump Test Bench. Currently more than 1000 units actively being used in 75 different countries, proving its wide range capability and effectiveness.

Features

Adjustable Cam Stroke

provides testing being as close to as standard working conditions of the injector. Internal pressure level maintains same as when running on the engine, creating a similar condition like in the engine and allowing the delivery to be compatible to the engine conditions.

UTS1004 patented Cam Box design, allows to set the cam stroke without

- draining oil,
- removing cam
- adjusting timing

It only takes turning a knob a few times to set the cam stroke.

Wide Application Range;

from Caterpillar to Continental VDO

UTS1004 has the technical infrastructure to test

- Caterpillar EUI: 3406E; zC15; C10;C11;C12;C13;C18; 3116 MEUI, 3500 MEUI; 3500E.
- Cummins: Celect N14/M11/M11+; HPI (ISX and QSK); K-STC;
- Bosch EUI/EUP all types.
- Delphi: A0; A3; E1; E3; F2P
- Detroit Diesel: all types.
- Continental VDO all types.

SRT Measurement

UTS1004 is capable to measure the Solenoid Response Time. SRT value determines the condition of the solenoid, assembly of the control valve with the spring tension and valve stroke. SRT value determines the timing of the delivery and thus relates to many problems such as smoke at acceleration and idling problems.

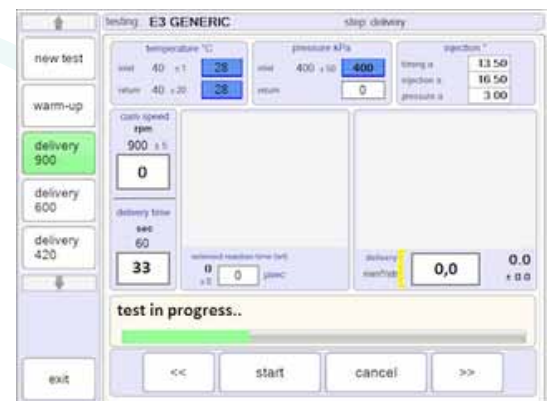
Easy User Interface with Test Plan Create and Calibrate Function
UTS1004 user interface provides all the necessary data on the test screen readily available for the user to decide the condition of the injector. The software allows the use to create different test plans. Software help user to keep the test plan target values calibrated with its automatic calibration feature.



Test Report as PDF File

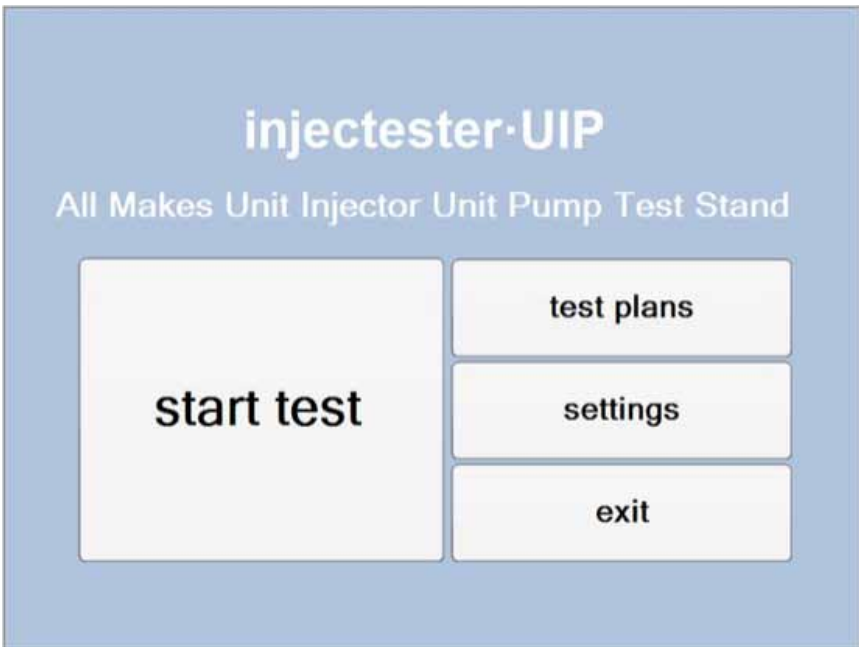


Manuel or Automatic Test



Test Screen Image





Home Screen

Test Oil Transfer System

- Tank : 30 L
- Pump : 4 L/min; gear type
- Supply Pressure : 0-25 bar; manually adjusted
- Return Pressure : 0-6 bar; manually adjusted
- Test Oil Heater : 2kW
- Test Oil Cooler : Air Cooled, with -5 °C/min with 4L/min transfer; usina seperate transfer pump

Instrumentation

- Flow/Delivery : Gear Type Flowmeter; max capacity 1000 mm³/str digitally displayed as graph mm³/str vs time
- SRT : ±10µs accuracy with respect to real BIP, digitally displayed as graph SRT Value : (µs) vs test time
- Inlet Pressure : 0-25 bar, digitally displayed
- Return Pressure : 0-6 bar, digitally displayed
- Supply Temperature: 10-160 °C digitally displayed
- Return Temperature : 10-160 °C digitally displayed.



Patented Cam Box; stroke set between 10 & 18 mm.



One of Test Adapters

Dimensions

- Machine Dimensions:
 - Width: 1200 mm
 - Depth: 800 mm
 - Height: 1830 mm
 - Weight: 590 kg
- Packing Dimensions:
 - Width: 1390 mm
 - Depth: 1080 mm
 - Height: 1970 mm
 - Weight: 700 kg



Optional Accessories for Various EUI / EUP

CB50400 DELPHI A3 TYPE @ VOLVO
CB50500 BOSCH VW-AUDI-SEAT SKODA
CB50600 BOSCH MERCEDES ACTROS TRAVEGO / EUP
CB50700 BOSCH MERCEDES AXOR / EUP
CB50800 VOLVO-BOSCH (8113408)
CB50900 BOSCH IVECO
CB51100 DELPHI LUCAS LAND ROVER - 17491CS
CB51300 CATERPILLAR 3500 (EUI 1320202-108528)
CB51400 BOSCH SCANIA
CB51500 CATERPILLAR 3116 (1071232-220264-1278209-727515)
CB51600 CATERPILLAR 2113025-2235320
CB51700 MARIN MECHANICAL INJECTOR (BR55510 100)
CB51900 DETROIT DIESEL SERIES 60
CB52000 CUMMINS MECHANICAL INJECTOR MS 3084398-3028066
CB52100 CATERPILLAR C10 (1660155-437290AU)
CB52200 BOSCH DAF-RENAULT /EUP
CB52300 BOSCH DEUTZ
CB52400 SIEMENS PPD 131021 / 1121013
CB52500 BOSCH VW-AUDI-SEAT-SKODA NEW TYPE
CB52600 DELPHI E3 & E1 TYPE @ VOLVO/RENAULT WITH 2 CABLES
CB52700 CUMMINS CELECT N14
CB52800 CUMMINS MECHANICAL INJECTOR NTA855
CB52900 DELPHI A3 TYPE @ HYUNDAI TRUCKS
CB53000 BOSCH VOLVO HEAVY DUTY WORK MACHINE /EUP
CB53100 ADAPTOR FOR SIEMENS VOLKSWAGEN
CB53200 BOSCH NISSAN (9 443 613 182)
CB53300 CUMMINS CELECT M11 - M11+ - ISM
CB53400 DELPHI UNIT PUMP FOR DAF (092330311 1668325 LKFK)
CB53600 LUCAS (KCCOT120A0020)
CB53700 VOLVO HEAVY DUTY (0414 750 003)
CB53800 BOSCH IVECO PDE 100S4003 (0414 703 004 - 010)
CB53900 BOSCH (0414 693 003)
CB54000 DELPHI John Deere Tractor
CB54100 BOSCH IVECO (0414 700 003)
CB54200 BOSCH 0986 411 029
CB54300 BOSCH 0412 010 594
CB54500 CATERPILLAR 3500 (MUI)
CB54600 CATERPILLAR 2490713
CB54700 LUCAS John Deere
CB54800 UNIT PUMP BOSH-DEUTZ (0414 491 107)
CB54900 VOLVO-BOSCH (0986 441 004-0414 701 004)
CB55000 DEUTZ PUMP (0428 7047)
CB55100 CUMMINS - QSK (4088428)
CB55300 CUMMINS MECHANICAL INJECTOR @ ISX (1521978-1464976)
CB55500 DETROIT DIESEL DD15 DELPHI E3 INJECTOR ADAPTER SET
CB55600 DETROIT DIESEL MUI (53/71/93) ADAPTER SET
CB55700 DETROIT DIESEL SERIES 149 EUI ADAPTER SET
CB55800 DETROIT DIESEL 8 MM EUI ADAPTER SET
CB56000 ADAPTER FOR EMD INJECTOR EUI
CB56100 VOLVO F2 PUMP INJECTOR ADAPTER SET



Testing Solutions of Cummins
HPI (ISX & QSK) Injectors



	4535 City Point Drive Ft Worth TX 76180 Ph: 817-485-6422 Fax: 817-485-6404 www.usdiesel.com
---	---

For more detailed information, contact your Maktest Inc. distributor or visit



MAKTEST DIESEL
INJECTION TEST AND
REPAIR SOLUTIONS

Continuous development is taking place. Maktest reserves the right to alter the design &/or specification without prior notice.
@Maktest 2020 / UTS1004 UIP Test Stand

